

**APPENDIX 4**  
**Land Registry Requirements for Acceptance of**  
**Computer Generated PAPER (Hard Copy) Maps**

**Table of Contents**

1	Ordnance Survey Detail: .....	2
2	Non-Ordnance Survey Detail: .....	2
3	Plotted Details: .....	2

**Table of Figures**

Figure 1	SAMPLE COMPUTER GENERATED MAP WITH ITM COORDINATES .....	3
Figure 2	SAMPLE COMPUTER GENERATED DEVELOPMENT SCHEME MAP WITH ITM COORDINATES .....	4

## APPENDIX 4

### Land Registry Requirements for Acceptance of Computer Generated PAPER (Hard Copy) Maps

**The Authority is always willing to consider special problems relating to a particular scheme or development.**

**Paper output from Digital Mapping systems may be accepted for registration purposes in the following instances:-**

#### **1 Ordnance Survey Detail:**

1.1 The topographic detail has been supplied initially by Ordnance Survey Ireland (OSi) in vector digital form referencing the ITM coordinate reference system.

1.2 There has been no alteration to the OSi topographic detail either by deletion or addition.

#### **2 Non-Ordnance Survey Detail:**

2.1 Non-Ordnance Survey detail has been input from field measurements (or floor measurements for multi-storey buildings) which are accurate within the plotting limitations of the scale being used.

2.2 Non-Ordnance Survey detail has been plotted/digitised so that it is distinguishable from OSi detail. *See samples on page 2 & 3*

#### **3 Plotted Details:**

3.1 Map detail has been plotted by a plotter of sufficient accuracy and resolution (minimum 300 dpi) to maintain the plotting accuracy of the scale being used.

3.2 The map has been plotted to the specified scale, i.e. 1/500 or 1:1,000 for urban, 1:2,500 for urban/rural (refer to Rule 174(4) of LR Rules 1972 – 2009(No.2))

**Note:** 1/5,000 and 1/10,000 scale maps are not be acceptable in hard copy form, regardless of whether they are original OSi or original Registry maps, unless the new property is entirely bounded by OSi topographic detail.

3.3 The map has been plotted on A3 or A4 size paper and be not less than 100g/m<sup>2</sup> in weight.

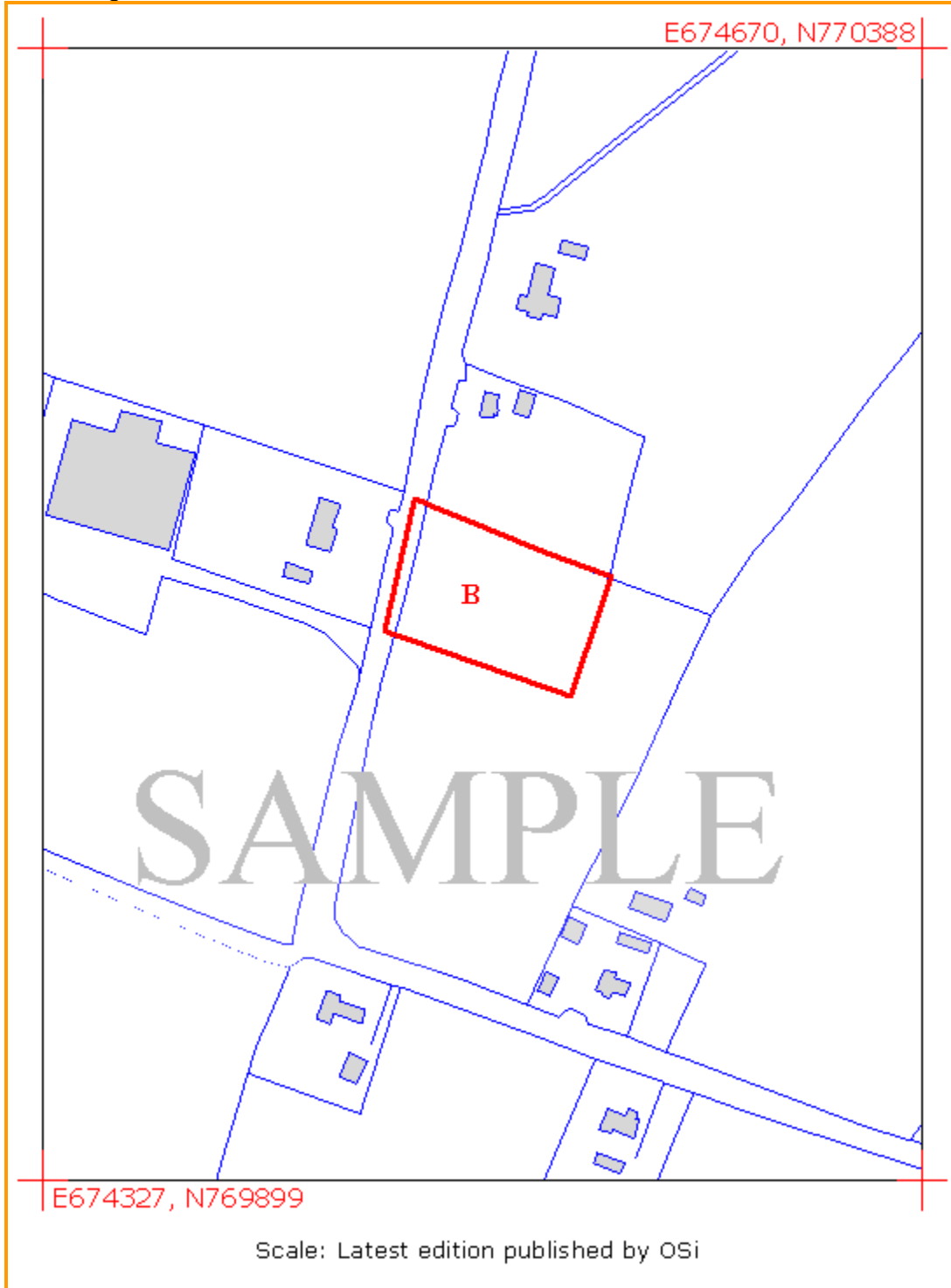
3.4 The map lodged must show ITM coordinates for the lower left and the upper right corners of the map frame.

3.5 The map has been prepared in accordance with Land Registry mapping requirements as set out in the relevant Act, Rules and Notices.

**APPENDIX 4**  
**Land Registry Requirements for Acceptance of**  
**Computer Generated PAPER (Hard Copy) Maps**

*The following diagram is a specimen (single registration) computer generated hard copy and is for illustration purposes only.*

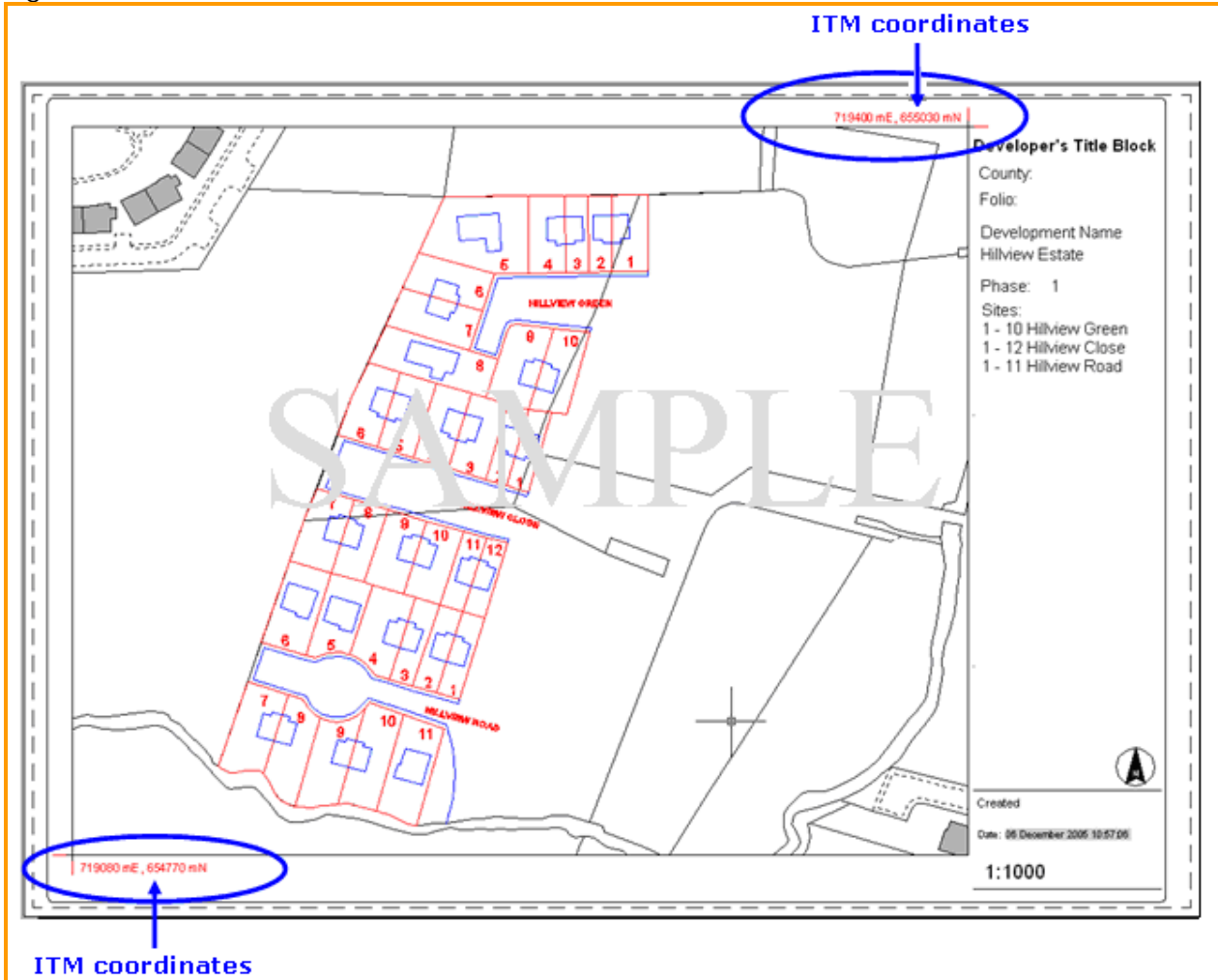
Figure 1 SAMPLE COMPUTER GENERATED MAP WITH ITM COORDINATES



**APPENDIX 4**  
**Land Registry Requirements for Acceptance of**  
**Computer Generated PAPER (Hard Copy) Maps**

The following diagram is a specimen (scheme development) computer generated hard copy and is for illustration purposes only.

Figure 2 SAMPLE COMPUTER GENERATED DEVELOPMENT SCHEME MAP WITH ITM COORDINATES



See Appendix 7 for guidelines on submitting ITM coordinate geometry in a CAD file.