

Mapping Guidelines - Appendix 11

Guide to using www.landdirect.ie Multi-Storey Building (MSB) Search

Table of Contents

1. Enter User name and password, or Proceed as Guest	2
2. Locate by Map or Property Address – click Search, then select Folio/ Address/ Townland/ Coordinate/ InspireID	3
3. Select By Address	3
4. To examine an MSB structure, click the MSB marker (the blue square)	6
5. In the menu to the right, click on Show Details under Multi Storey Scheme	6
6. Click the Block tree control to reveal the Floor/Level details	7
7. Click the Floor tree control to reveal Unit details	7
8. Click View Folio to inspect a Folio	8
9. If purchase is confirmed, user can view PDF version of the Folio.	9
10. No information but customer can pick out the area on the map	10
11. Customer knows the Unit Folio Number.	11
12. Customer knows the Developer's Folio number.	12
13. ITM Coordinates are known	13

Table of Figures

Figure 1 - landdirect section of www.prai.ie	2
Figure 2 - Login Page	2
Figure 3 - Map Search or Address Search option	3
Figure 4 - Street Address result	3
Figure 5 - Select address from list	4
Figure 6 - Identify folio icon	4
Figure 7 - Select address from list	5
Figure 8 - Map is zoomed to the GeoDirectory address	5
Figure 9 - MSB Marker	6
Figure 10 - MSB Development Tree control	6
Figure 11 - Block with Floor/Level Tree control	7
Figure 12 - Floor/Level Tree control	7
Figure 13 - View Folio option	8
Figure 14 - Continue to inspection of Folio	9
Figure 15 - PDF view of Folio - Page 1	9
Figure 16 - Zoom in and out of map	10
Figure 17 - Land Registry detail is visible at 1:5000 level	10
Figure 18 - Position of Folio is highlighted	11
Figure 19 - Map zooms to development	11
Figure 20 - Zoom to Developer's Folio	12
Figure 21 - Folio extents are highlighted	12
Figure 22 - Figure 31 Zoom to ITM coordinates	13
Figure 23 - ITM coordinates for centre-point of map are displayed	13

To Login – follow the link from www.prai.ie, or go directly to www.landdirect.ie

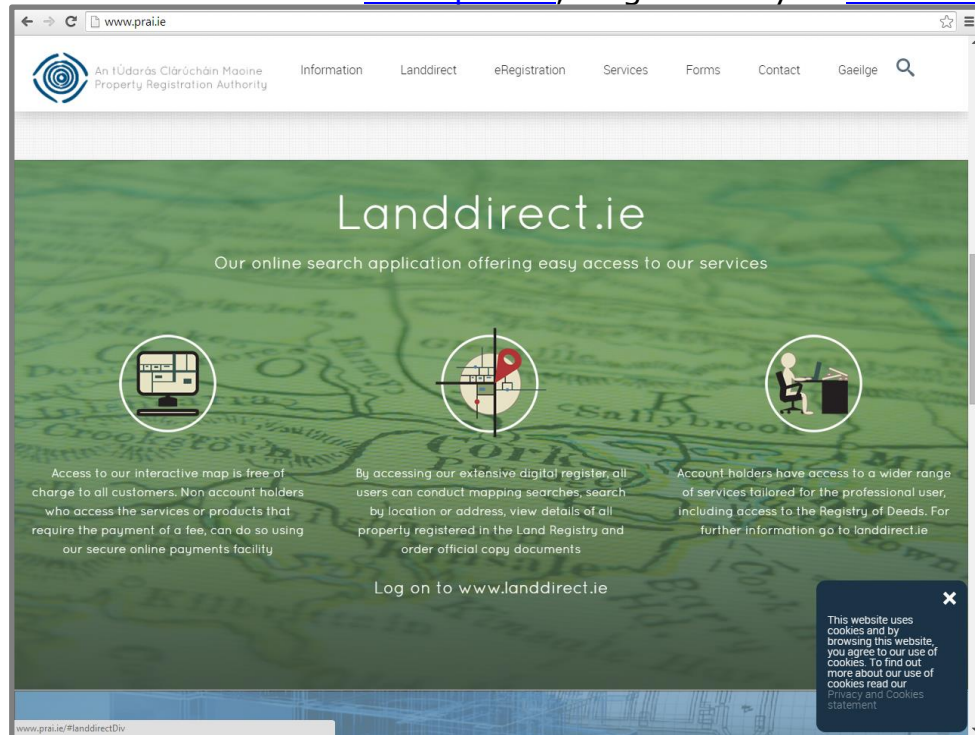


Figure 1 - landdirect section of www.prai.ie

1. Enter User name and password, or Proceed as Guest

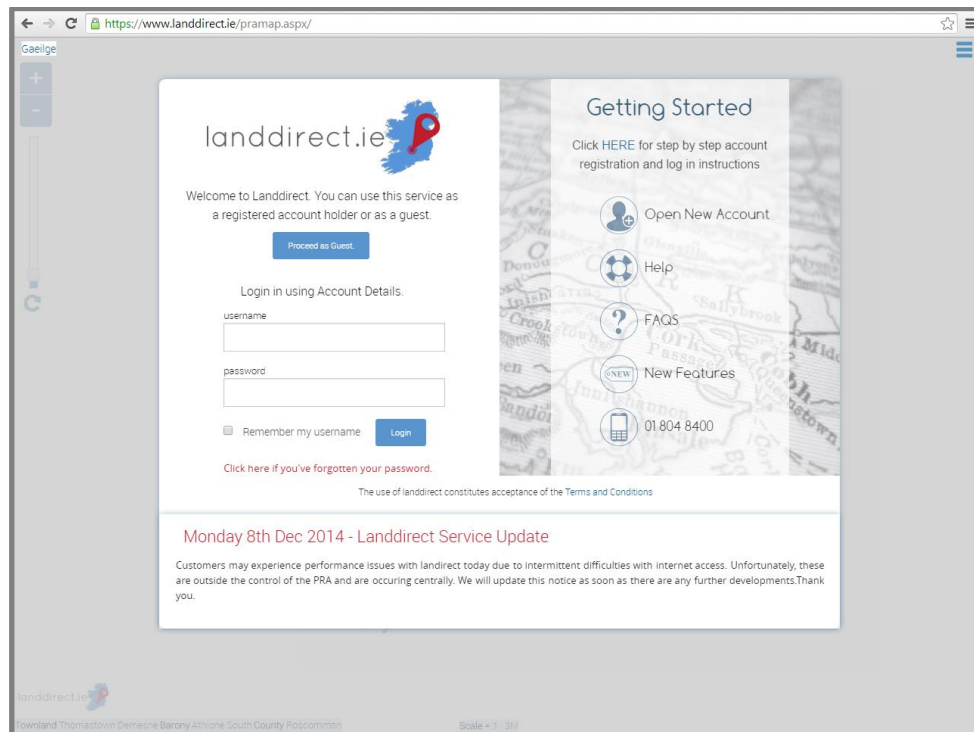


Figure 2 - Login Page

2. Locate by Map or Property Address – click Search, then select Folio/ Address/ Townland/ Coordinate/ InspireID

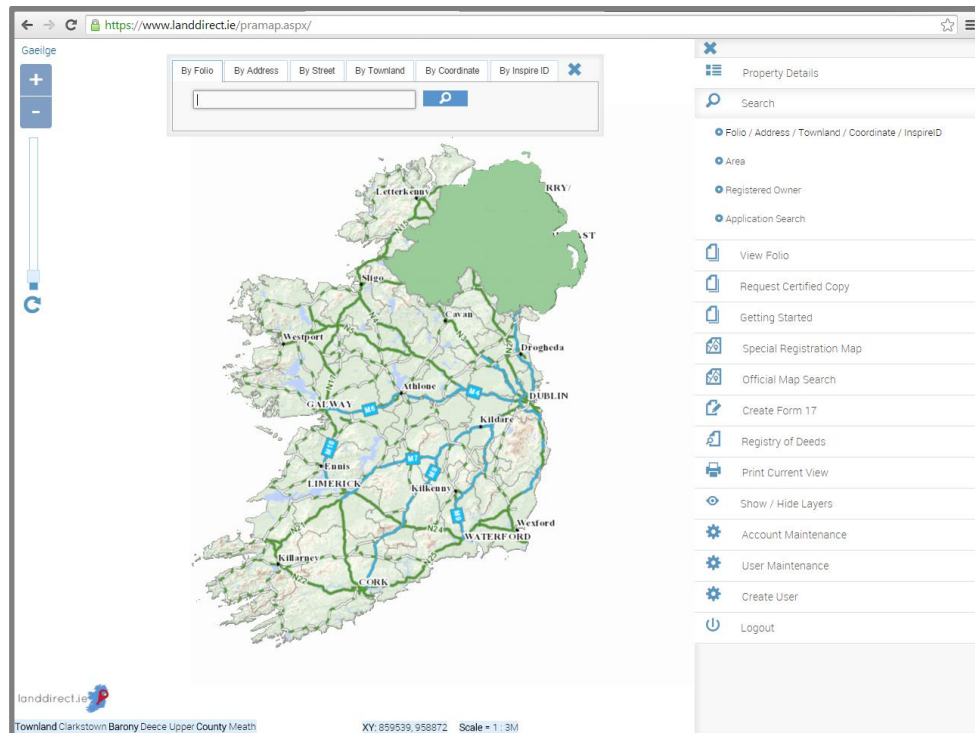


Figure 3 - Map Search or Address Search option

3. Select By Address

3.1 If the Street Name is known

3.2 Type in some (three or more letters) of the street name and select from list presented

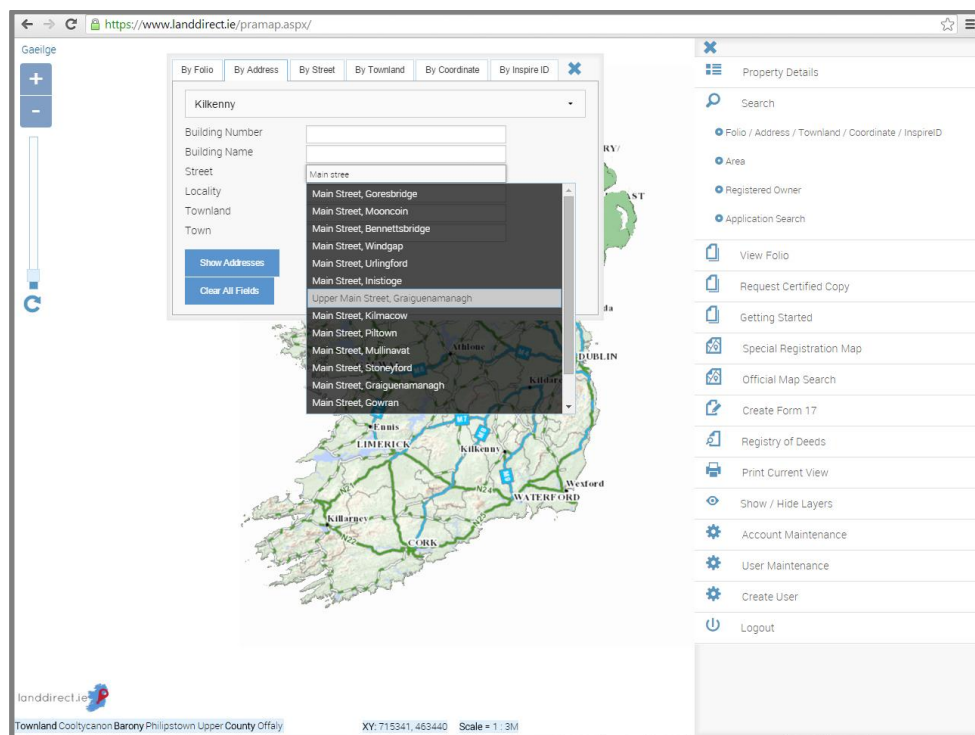


Figure 4 - Street Address result

3.2 Click Show Addresses

3.2.1 Drag the scroll bar to find the correct address

3.2.2 Select from the address list

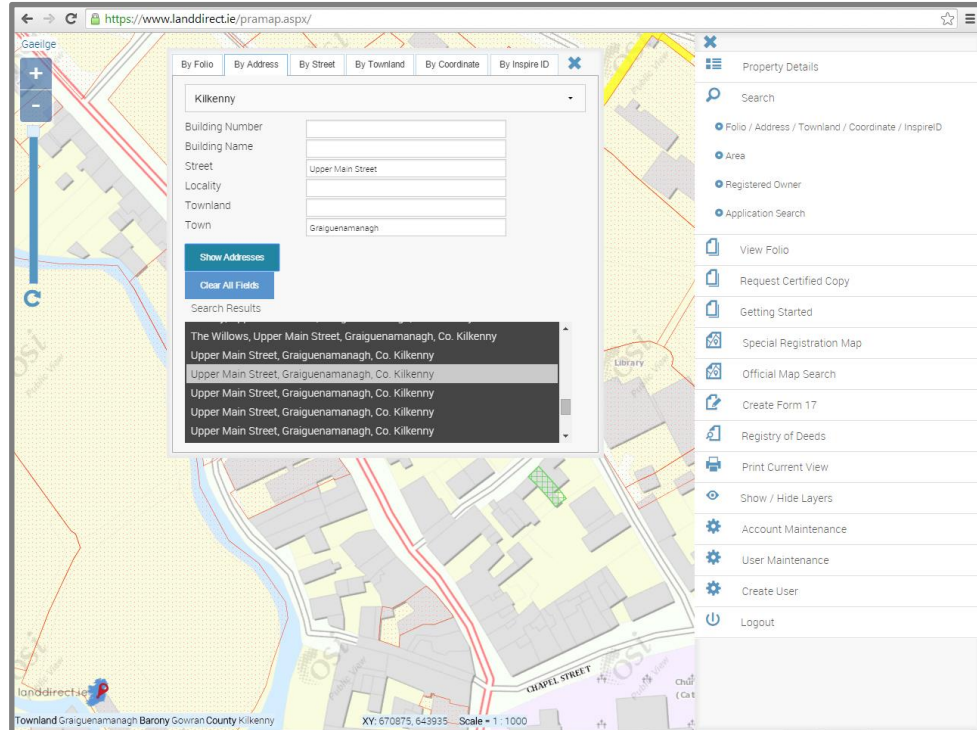


Figure 5 - Select address from list

3.2.3 Map zooms to the address

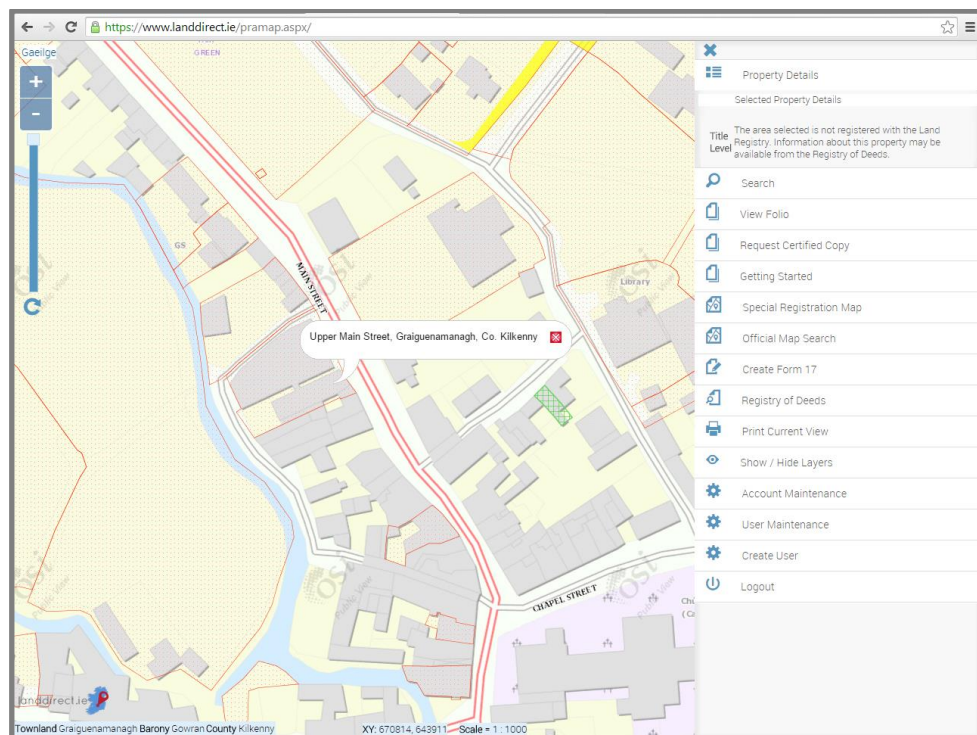


Figure 6 - Identify folio icon

3.3 Alternately if the building Name is known:

- 3.3.1 Type in some (three or more letters) of the building name, then click Show Addresses
- 3.3.2 Select from the address list

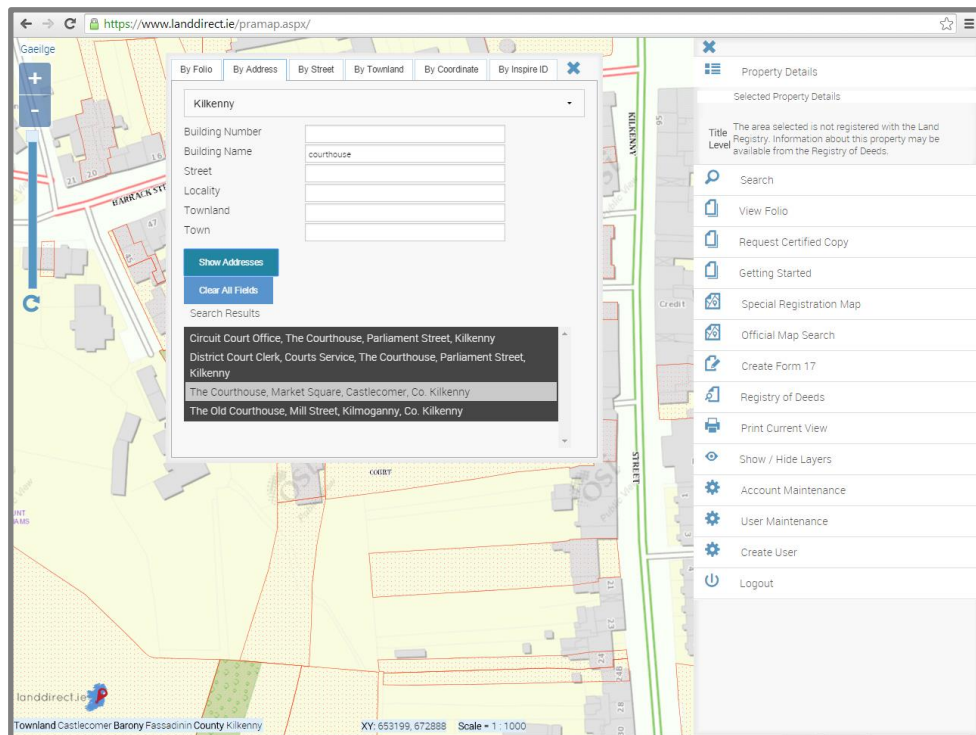


Figure 7 - Select address from list

- 3.3.3 Map zooms to the address

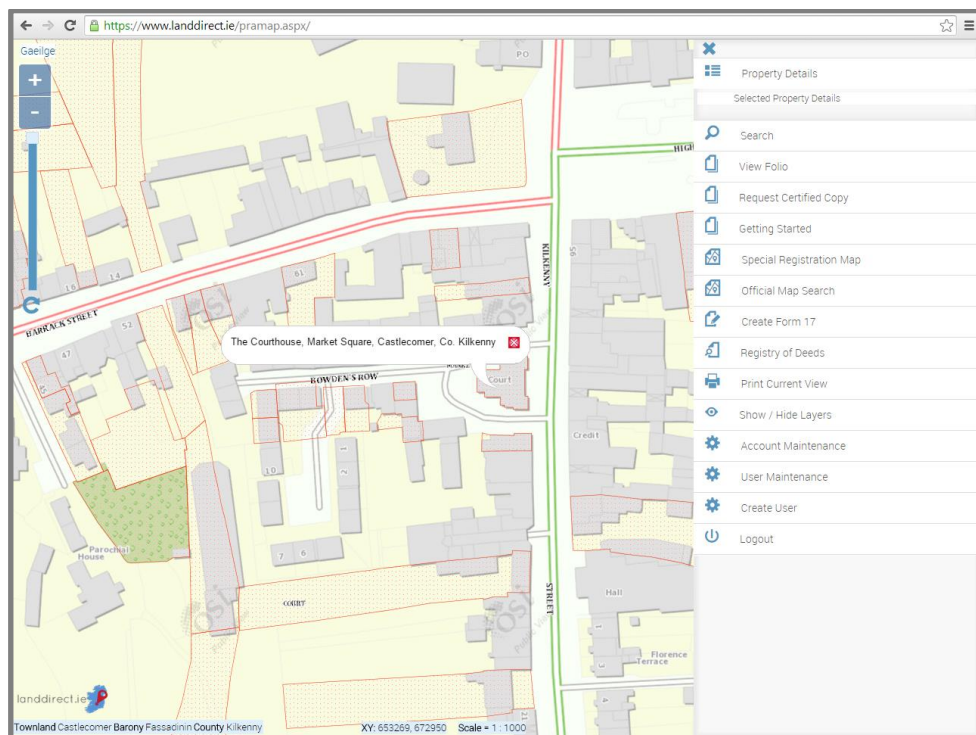


Figure 8 - Map is zoomed to the GeoDirectory address

4. To examine an MSB structure, click the MSB marker (the blue square)

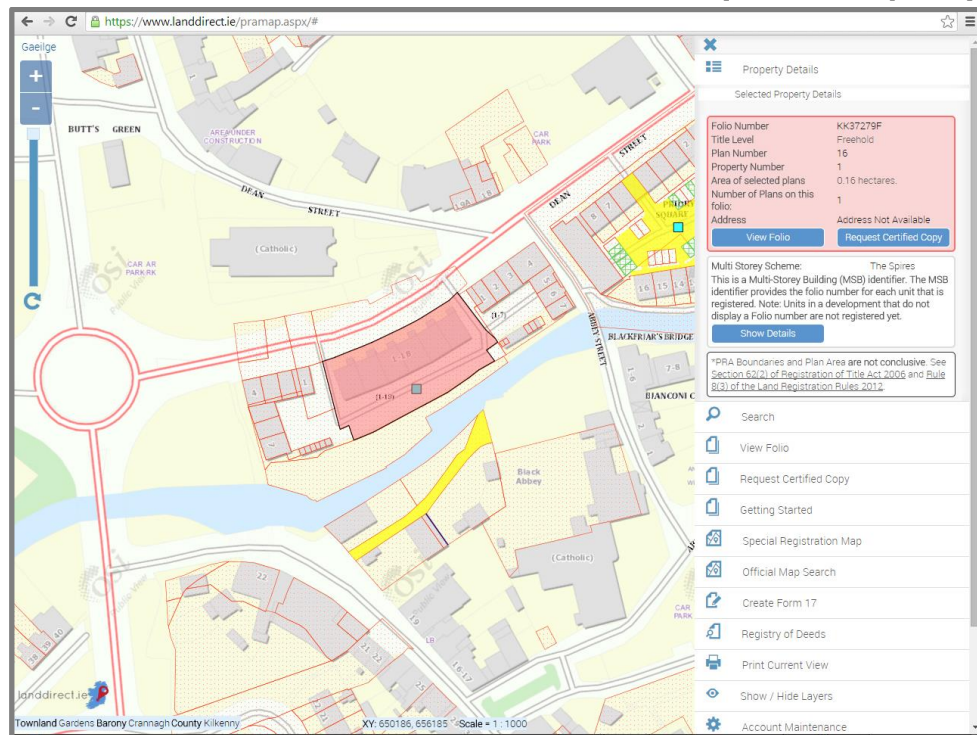


Figure 9 - MSB Marker

5. In the menu to the right, click on Show Details under Multi Storey Scheme

5.1 MSB tree structure displays

5.2 Development Name (and Block/Building details) displays.

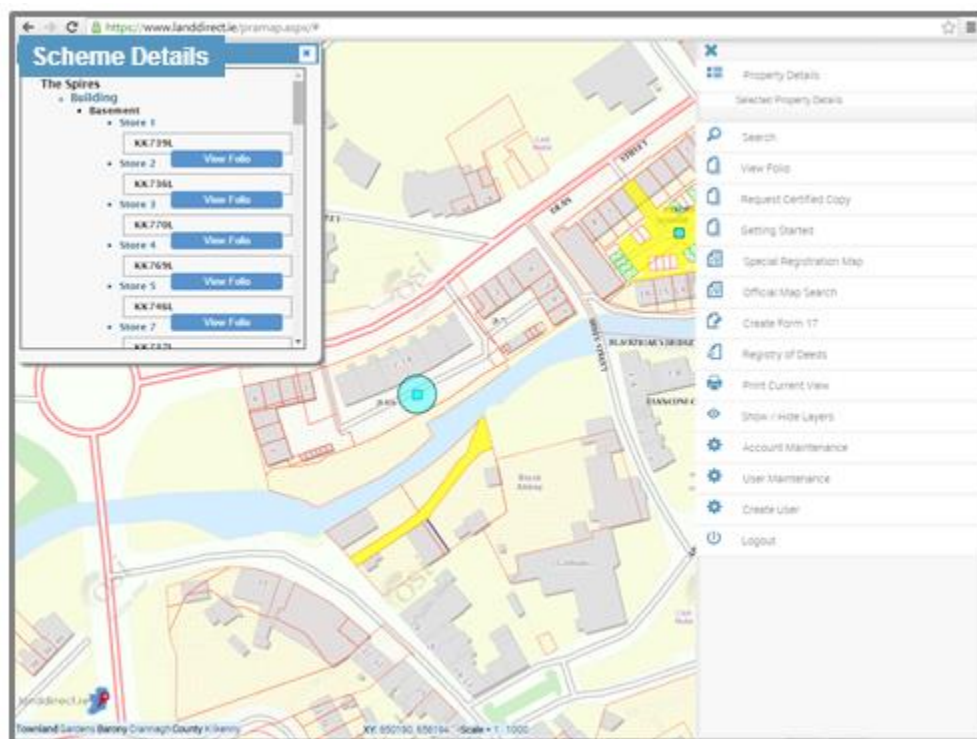


Figure 10 - MSB Development Tree control

6. Click the Block tree control to reveal the Floor/Level details

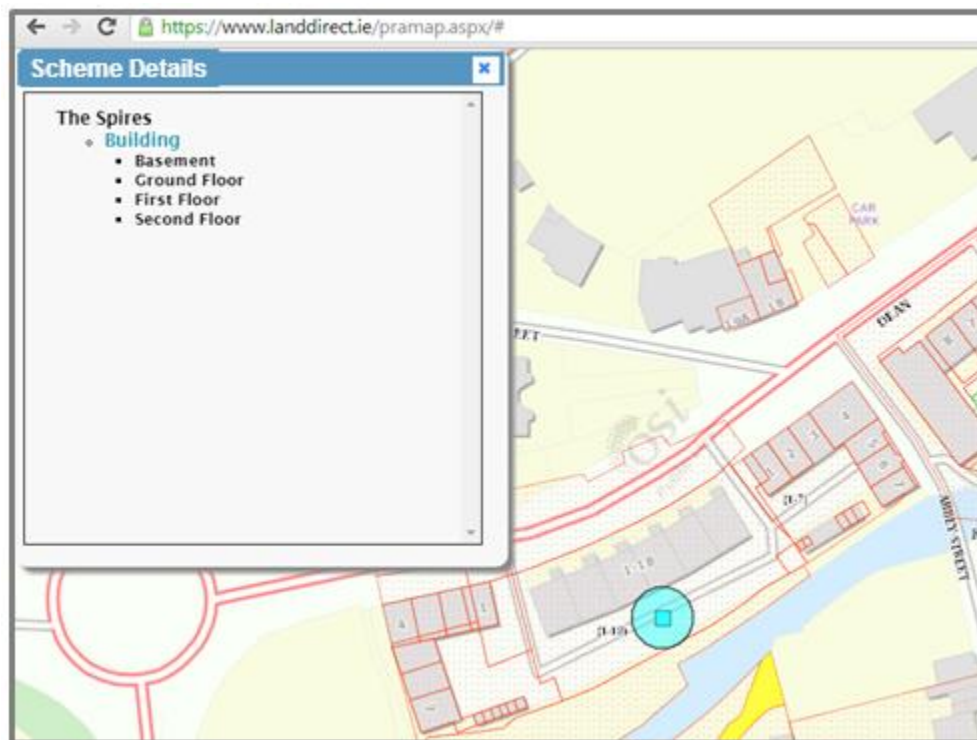


Figure 11 - Block with Floor/Level Tree control

7. Click the Floor tree control to reveal Unit details

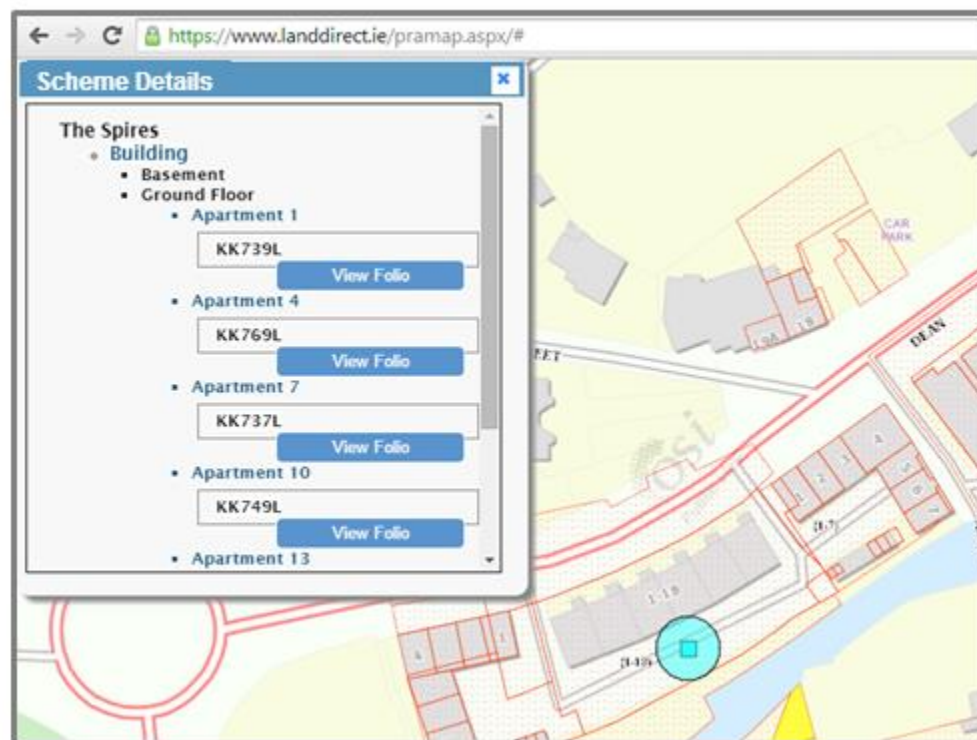


Figure 12 - Floor/Level Tree control

7.1 Where units are registered the Unit tree control is available and will display the Folio number, if the units are not yet registered the tree will not expand as there are no registration details to be revealed.

8. Click View Folio to inspect a Folio

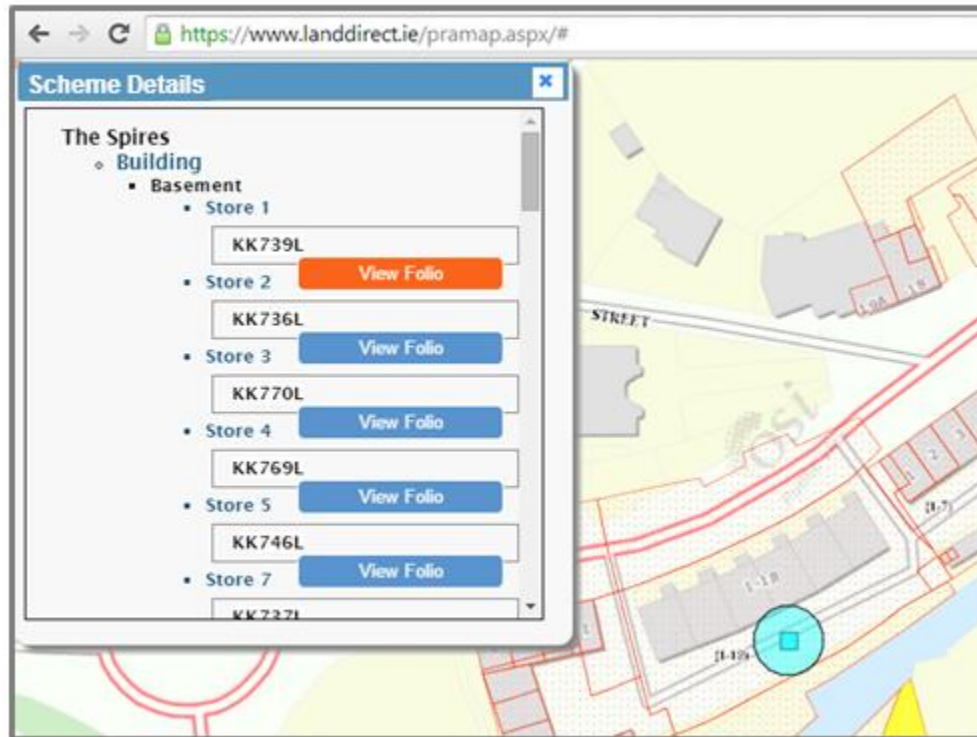


Figure 13 - View Folio option

8.1 Customer is prompted to confirm that they wish to continue with the Folio inspection and are given details about the fee for the transaction.

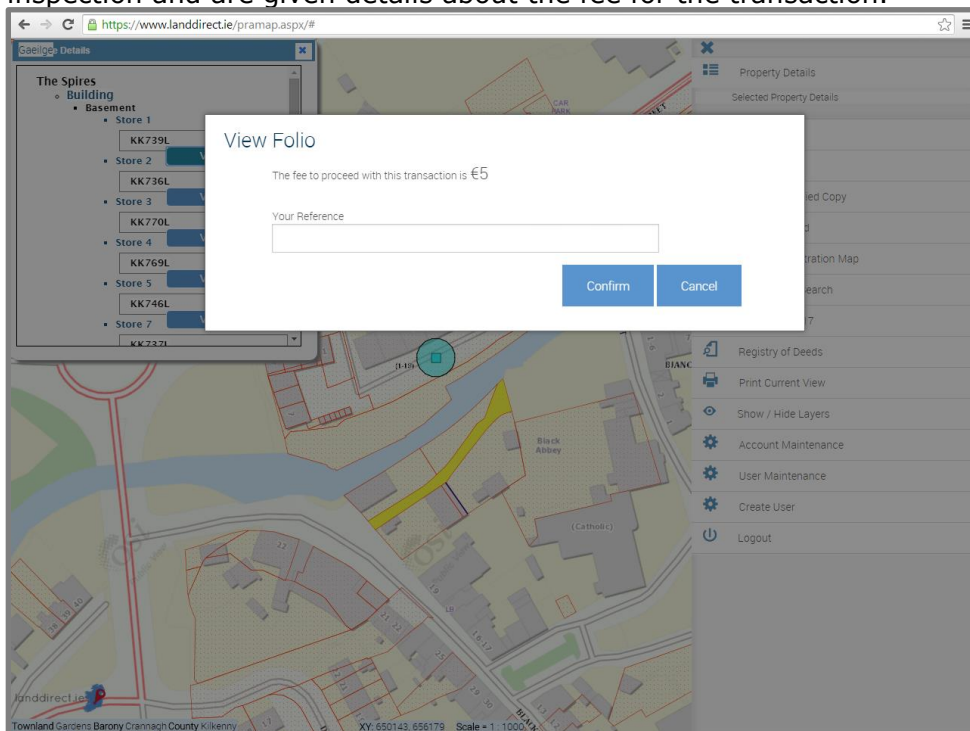
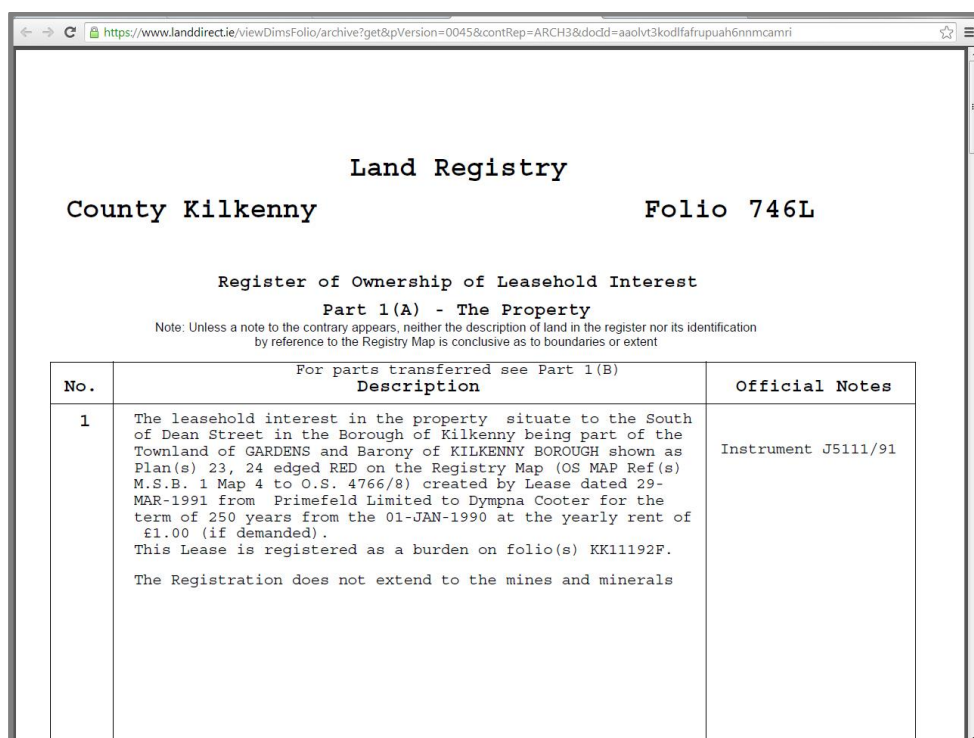


Figure 14 - Continue to inspection of Folio

9. If purchase is confirmed, user can view PDF version of the Folio.



Land Registry

County Kilkenny Folio 746L

Register of Ownership of Leasehold Interest

Part 1(A) - The Property

Note: Unless a note to the contrary appears, neither the description of land in the register nor its identification by reference to the Registry Map is conclusive as to boundaries or extent

No.	For parts transferred see Part 1(B) Description	Official Notes
1	The leasehold interest in the property situate to the South of Dean Street in the Borough of Kilkenny being part of the Townland of GARDENS and Barony of KILKENNY BOROUGH shown as Plan(s) 23, 24 edged RED on the Registry Map (OS MAP Ref(s) M.S.B. 1 Map 4 to O.S. 4766/8) created by Lease dated 29-MAR-1991 from Primefeld Limited to Dympna Cooter for the term of 250 years from the 01-JAN-1990 at the yearly rent of £1.00 (if demanded). This Lease is registered as a burden on folio(s) KK11192F. The Registration does not extend to the mines and minerals	Instrument J5111/91

Figure 15 - PDF view of Folio - Page 1

There are a number of different ways provided to enable customers to search the register.

Depending on the information that the customer has determines the best or quickest way to get the information required – see the examples on the following pages.

10. No information but customer can pick out the area on the map

10.1 Use the navigation tools to the left of the screen to zoom in and out of the map.

10.2 The Coordinates and Scale are displayed in the bottom of the screen.



Figure 16 - Zoom in and out of map

10.3 Zooming in to a scale of 1:5000 will reveal the Land Registry detail, including the Multi Storey markers.

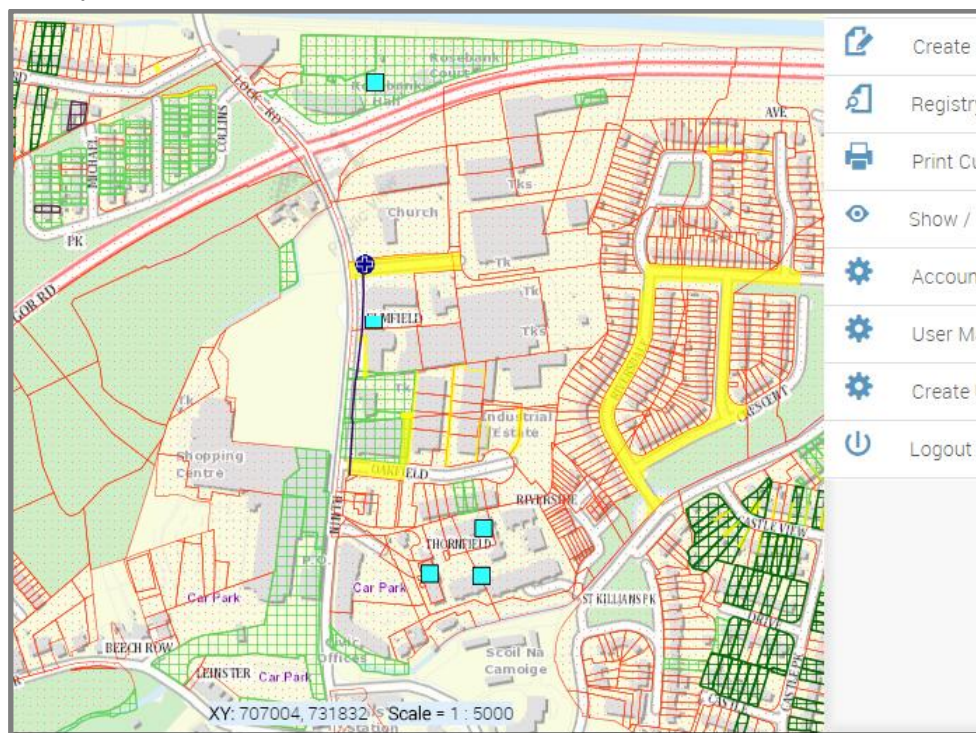


Figure 17 - Land Registry detail is visible at 1:5000 level

Follow steps 5 to 10 to view MSB details.

11. Customer knows the Unit Folio Number.

11.1 Type the Folio Number into the Zoom to Folio field and click the search symbol.

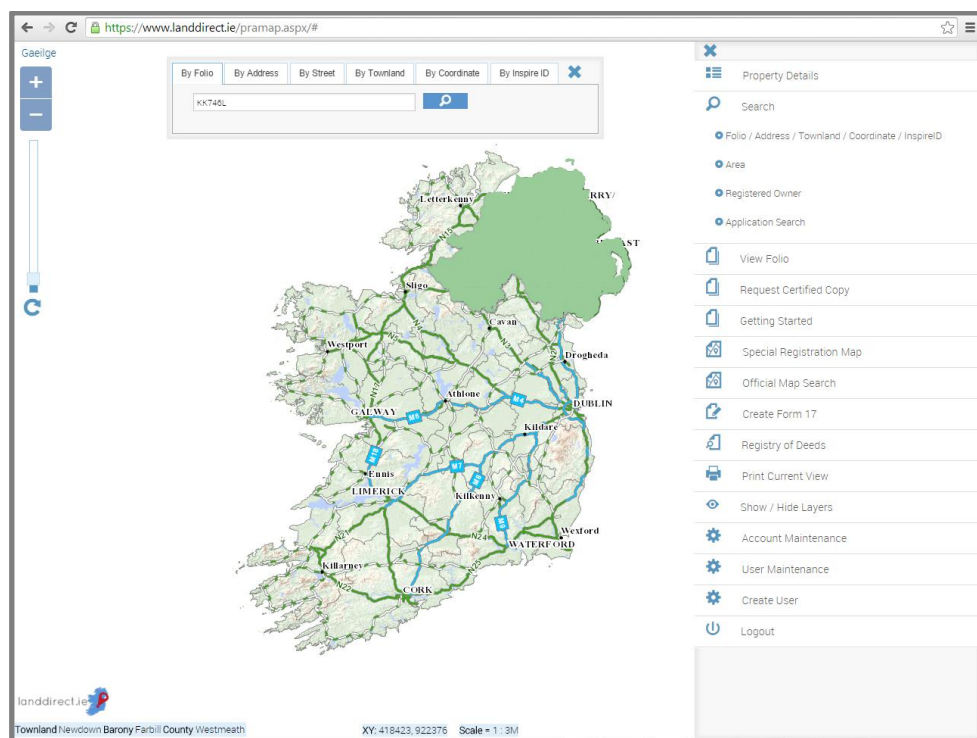


Figure 18 - Position of Folio is highlighted

11.2 Map zooms directly to the location of the Folio

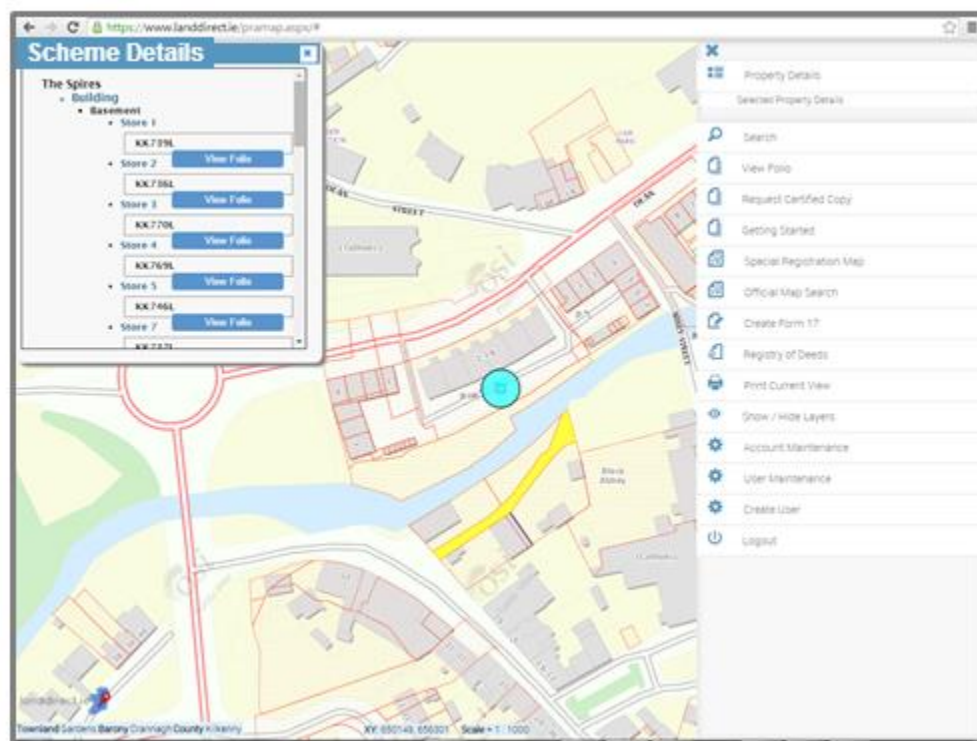


Figure 19 - Map zooms to development

Follow steps 4 to 10 to view MSB details.

12. Customer knows the Developer's Folio number.

12.1 Type the Developer's Folio number into the Zoom to Folio field and click the search symbol.

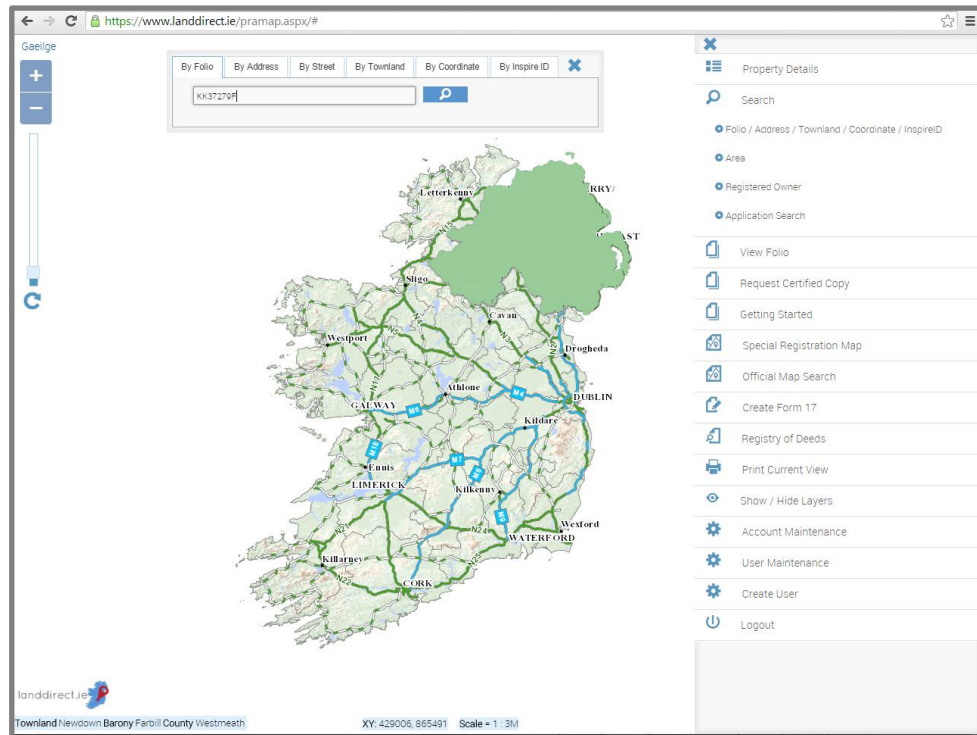


Figure 20 - Zoom to Developer's Folio

12.2 Map zooms to the Folio extents. The MSB marker will be located within or near the Folio lands.

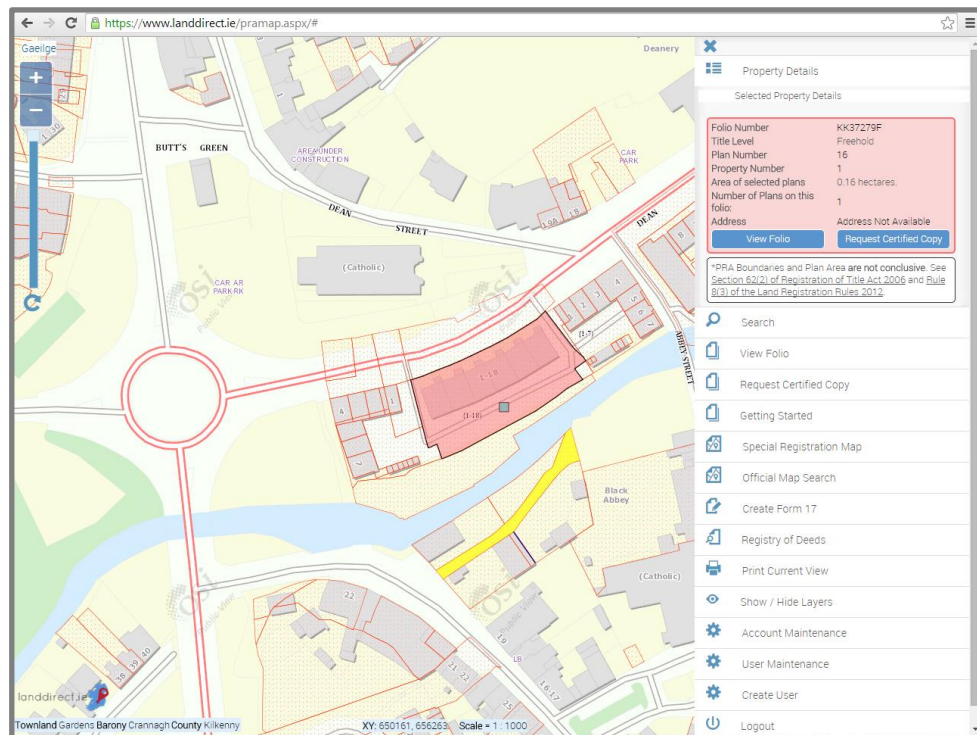


Figure 21 - Folio extents are highlighted

Follow steps 4 to 10 to view MSB details.

13 ITM Coordinates are known.

13.1 Type the co-ordinates into the Longitude (X) and Latitude (Y) fields and click Zoom.

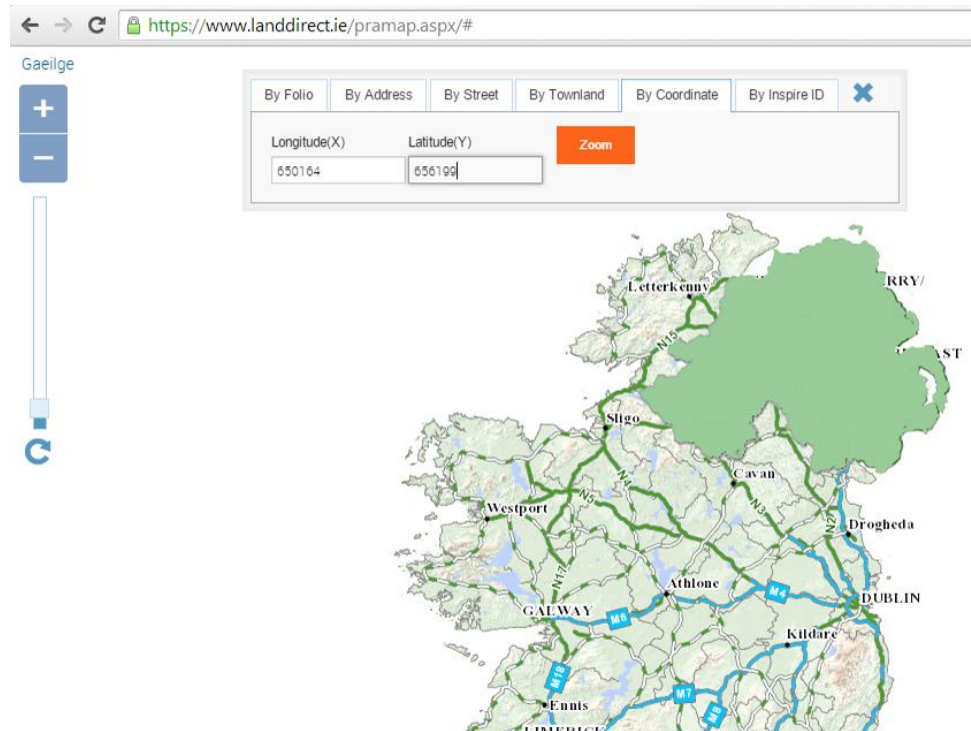


Figure 22 - Zoom to ITM coordinates

13.2 Map will zoom to those ITM coordinates

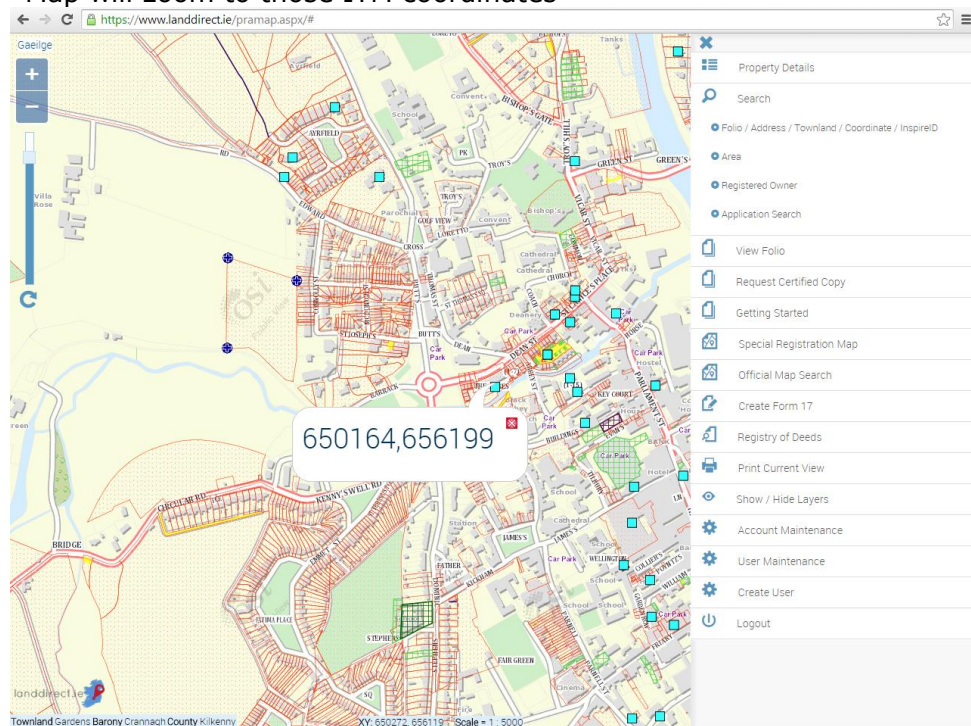


Figure 23 - ITM coordinates for centre-point of map are displayed

Follow steps 4 to 10 to view MSB details.